



POWERED TUBE CLEANING EQUIPMENT

A Quality Tools
For Maintenance
And Repairing
For Many Other Types
Of Tube



- Boilers
- Condensers
- Heat Exchangers
- Evaporators
- Chiller / Absorbers
- Sugar Factory



GENERAL INFORMATION

The size (i.e. diameter) of the flexible drive and toolhead to be used is governed by the internal diameter (i.e. "i.d.") of the tube, the thickness of the scale deposit and the hp to be transmitted. The length is dependent upon the tube's length and the final position of the power unit. If the accumulated scale is thick, toolheads of a small size must be used initially to reduce the thickness of the scale. Remember that powered rotary equipment is the most effective method of removing scale. Always use water wherever possible, to wash away scale and keep tool heads cool. Otherwise, dip the hand piece and tool head in a bucket of cold water periodically. Evaporators and other vertical tubular plant should preferably be filled with water before descaling, for the same reason.



Save man

The Power tube cleaning Equipment. This lightweight, Compact cleaning unit provides all the power you need for most cleaning operations while remaining easy-to-use and extremely versatile



Save time

Deposits in the tubes of your Boiler will do more than reduce operating efficiency.



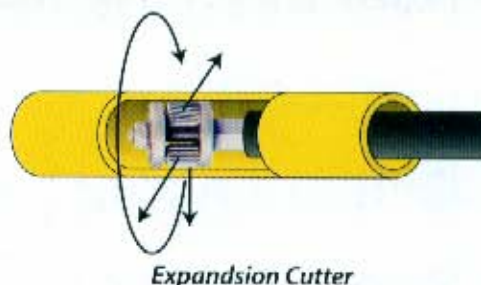
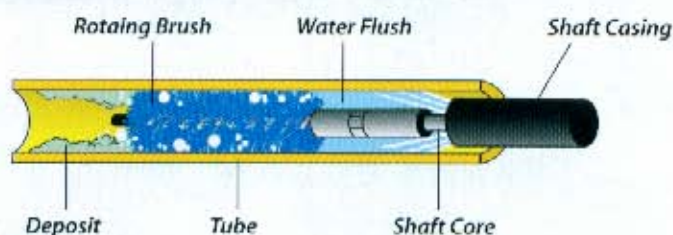
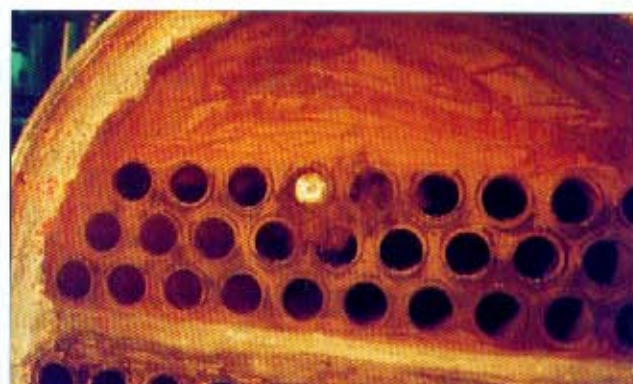
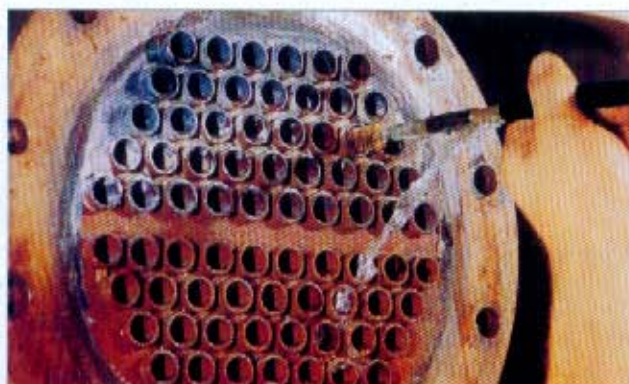
Save cost

Regular tube cleaning will reduce the costs of operation through increased efficiency and insure long-term reliability.



Save energy

The power tube cleaning Equipment Can help your Boiler and Condenser Increased efficiency and protect pollution.



Model PCR - 1X For Firetube Boiler



Power Unit.

Power unit are produced with heavy duty chassis, fitted with the highest standard motor. And Push starters are fitted with AMP. Overload to avoid damage.

Applications.

For cleaning 1 1/2" - 4" ID straight tube in boilers and heat exchangers.

Specifications.

- Electric motor 3HP., 2900 rpm.
- Power supply 380v., 50Hz, 3 phase.
- Push button starter with overload relays 3.7 - 5.5 Amp., IP65.
- Dimensions 320 X 500 X 400 mm.
- Weight 20kg.

Driven Boiler Tube Cleaners

Deposits in the tubes of your boiler will do more than reduce operating efficiency, they will also corrode the tube surface leading to eventual failure and costly replacement or repair.



Vacuum Drives

The removal of particulate can be safe and easy with the use of a shrouded vacuum Flexible drive. Powered from either air or electric vacuum, this system is efficient and easy to use.



Flexible Drive Dimensions.



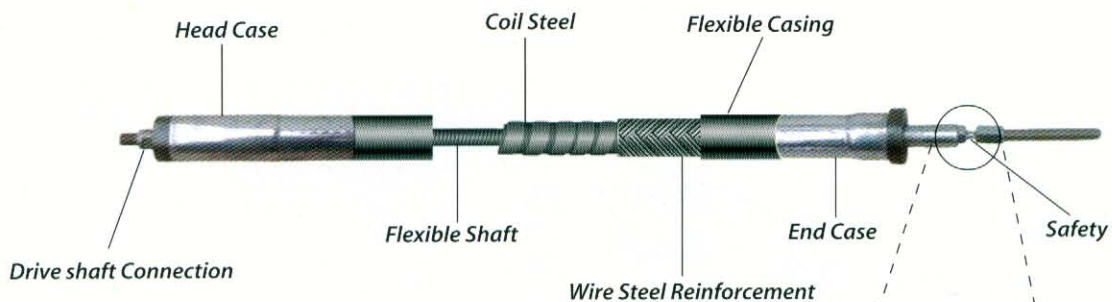
Model	Length mtr.	Inner Shaft Inc.	mm.	Outer Casing Inc.	mm.	Tube I.D. Inc.	mm.
HFS 1330-25	7.5	1/2"	13	1 1/8"	30	1 1/2"- 2 1/4"	38-57
HFS 1330-33	10						
HFS 1330-50	15						
HFS 1330-65	20						
HFS 1532-25	7.5	5/8"	15	1 1/4"	32	1 1/2"- 4"	38-100
HFS 1532-33	10						
HFS-1532-50	15						
HFS-1532-65	20						

Flexible Drive

The Quality and long life Flexible Drive wet/dry application.

Specifications.

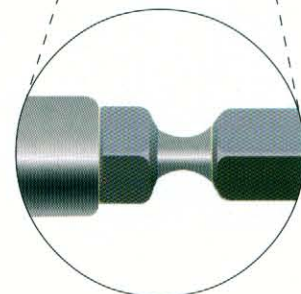
- Rubber casing heat and oil resistant.
- Wire steel Reinforcement.
- Coil steel in Flexible Casing for Flexible Shaft protection.
- Flexible shaft is double wound in opposing layers made out of high tensile-spring steel wires, made to absolute-vibration.



Flexible Drive Ordering.

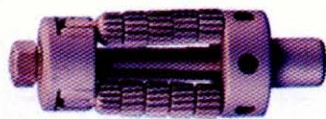
To order flexible Drive ,determine tube I.D. and length of longest tube. Order flexible Drive To Correspond With tube I.D. and lengths.

(Consult factory for longer flexible Drive if required)



Flexible Drive Protect By Safety
Intelligence License

Tool Heads



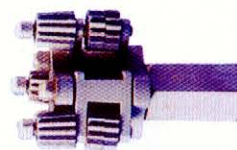
'HZ' Type

'HZ' Type cutter heads
These Spring loaded, self expanding Cutter Heads are designed for rapid removal of hard scale in straight tube.



'STR' Type

'STR' Type Cutter Heads.
For Thick, Stubborn Scale in Condenser, evaporator.



'SA'

'SA' Cutter Heads
For thick Scale.



'H' Type

'H' Type Cutter Heads
These Cutter Heads are designed for cleaning straight and curved tube.



'WA' Type

'WA' Type Cutter Heads
These Cutter Heads Swing out by Centrifugal force For Curved or Straight tube.



'YT' Type

'YT' Type
For fully blocked tube of deposit. Use with H Type or HZ Type.

Size inch	mm.	'HZ' Type Cutter Heads	'H' Type Cutter Heads	'YT' Type Cutter Heads	'STR' Type Cutter Heads	'WA' Type Cutter Heads	'SA' Type Cutter Heads
3/4"	19.05	-	-	-	-	-	-
7/8"	22.22	-	-	-	-	-	-
1"	25.40	-	-	-	STR-08	-	-
1 1/8"	28.57	-	-	-	STR-08	-	-
1 1/4"	31.75	HZ-10	H-10	YT-10	STR-10	-	-
1 3/8"	34.92	HZ-11	H-11	YT-11	STR-10	-	-
1 1/2"	38.10	HZ-12	H-12	YT-12	STR-12	WA-12	-
1 5/8"	41.27	HZ-13	H-13	YT-13	STR-12	-	-
1 3/4"	44.45	HZ-14	H-14	YT-14	-	WA-14	-
1 7/8"	47.62	HZ-15	H-15	YT-15	-	-	-
2"	50.80	HZ-16	H-16	YT-16	-	WA-16	SA-16
2 1/8"	53.97	-	H-17	YT-17	-	-	-
2 1/4"	57.15	-	H-18	YT-18	-	WA-18	SA-18
2 3/8"	60.32	-	H-19	YT-19	-	-	-
2 1/2"	63.50	-	H-20	YT-20	-	WA-20	SA-20
2 5/8"	66.67	-	H-21	-	-	-	-
2 3/4"	69.85	-	H-22	-	-	WA-22	SA-22
2 7/8"	73.02	-	H-23	-	-	-	-
3"	76.20	-	H-24	-	-	WA-24	SA-24
3 1/2"	88.90	-	H-28	-	-	WA-28	SA-28
4"	101.60	-	H-32	-	-	WA-32	SA-32

Wire Brushes



"TH" for soot removal from smoke tubes, general cleaning.



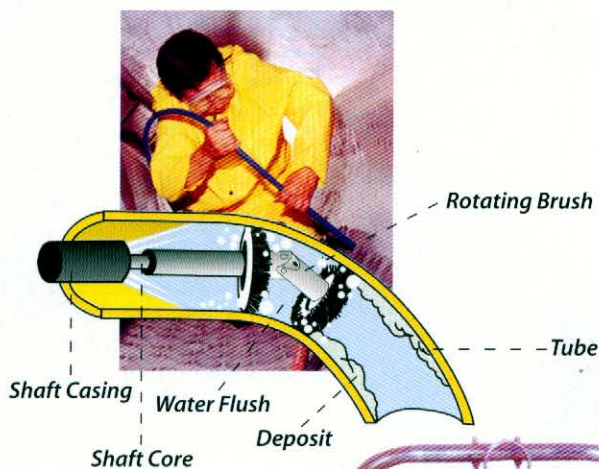
"DS" for removing light scale and burnishing all types of tube.



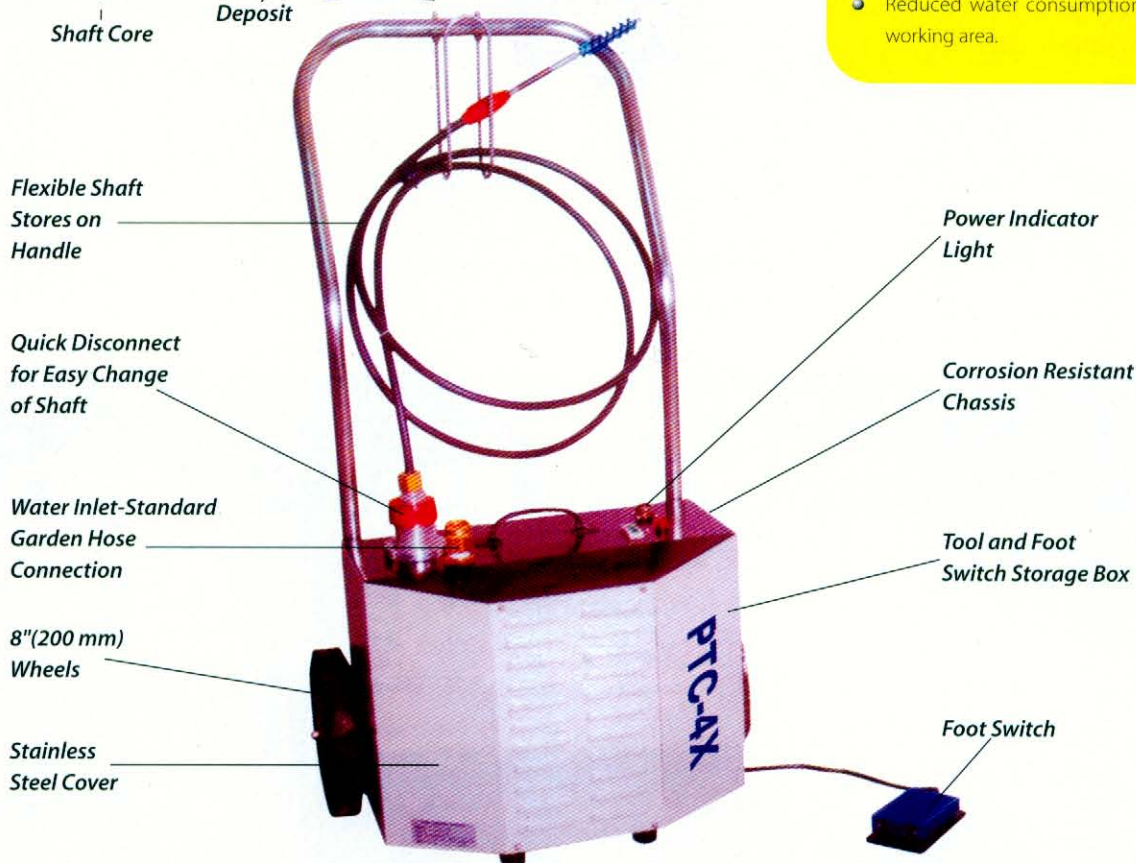
"WBA" heavy duty Brushes.

Size		'TH' Turk Head Brush Model	'DS' Double Spiral Brush Model	'WBA' Brush Model
inch	mm.			
1.1/4	31.7	TH-10	DS-10	WBA-10
1.3/8	35.0	TH-11	DS-11	WBA-11
1.1/2	38.1	TH-12	DS-12	WBA-12
1.5/8	41.3	TH-13	DS-13	WBA-13
1.3/4	44.5	TH-14	DS-14	WBA-14
1.7/8	47.6	TH-15	DS-15	WBA-15
2	50.8	TH-16	DS-16	WBA-16
2.1/8	54.0	TH-17	DS-17	WBA-17
2.1/4	57.1	TH-18	DS-18	WBA-18
2.3/8	60.3	TH-19	DS-19	WBA-19
2.1/2	63.5	TH-20	DS-20	WBA-20
2.5/8	66.7	TH-21	DS-21	WBA-21
2.3/4	70.0	TH-22	DS-22	WBA-22
2.7/8	73.0	TH-23	DS-23	WBA-23
3	76.2	TH-24	DS-24	WBA-24
3.1/8	79.4	TH-25	DS-25	WBA-25
3.1/4	82.5	TH-26	DS-26	WBA-26
3.3/8	85.7	TH-27	DS-27	WBA-27
3.1/2	88.9	TH-28	DS-28	WBA-28
3.5/8	92.1	TH-29	DS-29	WBA-29
3.3/4	95.2	TH-30	DS-30	WBA-30
3.7/8	98.4	TH-31	DS-31	WBA-31
4	101.6	TH-32	DS-32	WBA-32

Model PTC - 4X For Watertube Boiler / chiller / Heat Exchangers



- Corrosion resistant stainless steel cover and chassis for longer life.
- Easy interchangeability of various shaft and accessories for maximum versatility.
- Flexible shaft can be easily disconnected without need for any tools.
- Large wheels for easy maneuverability.
- Water flushes through the shaft as it rotates to remove deposits from tubes to save time.
- Foot switch operation makes it convenient for operator.
- Reduced water consumption for cleaner working area.



Electric tube Cleaners are Compact self contained, roll anywhere units that can be used in confined areas. Operation through a foot switch ensures the need for one operator. The brushes or other cleaning tools are rotated through the tube at the tip of a Flexible Shaft. Water Simultaneously flushes out loosened deposits leaving tubes cleaned. Flexible Shafts ensure use in bent tubes. All models are supplied with mobile dolly, tool storage box, single direction foot switch. **Optional** 2 direction foot switch.

Tube I.D. inch.	Tube I.D. mm	Tube Cleaner Model No.	Motor Power HP	Motor Power kW	Motor Speed RPM	Weight lbs.	Weight Kg.	High	Dimension Wide	Deep
1 & UP	25.4 & UP	PTC-4X	1	0.75	1740	68	31	37"(940mm)	20"(508mm)	17"(432mm)
1 & UP	25.4 & UP.	PTC-4X-2A	2	1.50	1740	75	34	37"(940mm)	20"(508mm)	17"(432mm)

All units available in your choice of:
115v 60Hz, 115v 50 Hz - 9 Amps.
220v 60 Hz, 220v 50Hz - 4.5 Amps.
Please Specify when ordering.